

Anti-mouse CTLA4 mIgG2b Antibody(9D9)

Product Information

Product Name	Anti-mouse CTLA4 mIgG2b Antibody(9D9)
Storage temp.	Store at 2-8°C short term (1-2 weeks).Store at \leq -20°C long term. Avoid repeated freeze-thaw.
Catalog# / Size	GM-87752MAB-1mg / 1 mg GM-87752MAB-5mg / 5 mg GM-87752MAB-25mg / 25 mg GM-87752MAB-50mg / 50 mg GM-87752MAB-100mg / 100 mg

Antibody Information

Expression System	CHO
Aggregation	< 5% as determined by SEC-HPLC
Purity	> 95% as determined by SDS-PAGE
Endotoxin	< 1 EU/mg, determined by LAL gel clotting assay
Sterility	0.2 μ m Filtered
Target	CTLA4
Clone	9D9
Other Names	ALPS5, CD, CD152, CELIAC3, CTLA4, GRD4, GSE, IDDM12
Source/Isotype	Monoclonal Mouse mIgG2b, κ
Description	CTLA-4 or CTLA4 (cytotoxic T-lymphocyte-associated protein 4), also known as CD152 (cluster of differentiation 152), is a protein receptor that functions as an immune checkpoint and downregulates immune responses. CTLA-4 is constitutively expressed in regulatory T cells but only upregulated in conventional T cells after activation – a phenomenon which is particularly notable in cancers. It acts as an "off" switch when bound to CD80 or CD86 on the surface of antigen-presenting cells. CTLA-4 is a member of the immunoglobulin superfamily that is expressed by activated T cells and transmits an inhibitory signal to T cells. CTLA-4 is homologous to the T-cell co-stimulatory protein, CD28, and both molecules bind to CD80 and CD86, also called B7-1 and B7-2 respectively, on antigen-presenting cells. CTLA-4 binds CD80 and CD86 with greater affinity and avidity than CD28 thus enabling it to outcompete CD28 for its ligands. CTLA-4 transmits an inhibitory signal to T

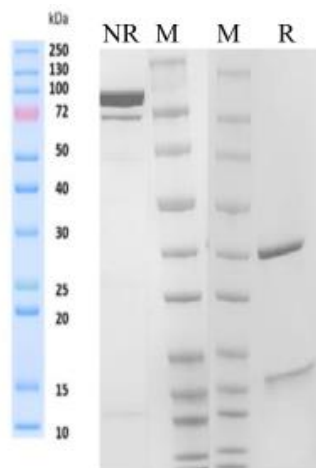
Version:3.3

cells, whereas CD28 transmits a stimulatory signal. CTLA-4 is also found in regulatory T cells (Tregs) and contributes to their inhibitory function. T cell activation through the T cell receptor and CD28 leads to increased expression of CTLA-4.

Formulation

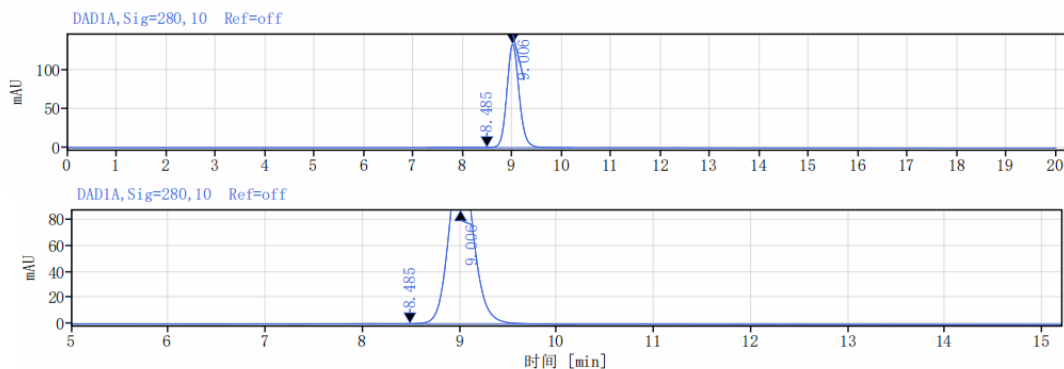
Phosphate-buffered solution, pH 7.2.

SDS-PAGE



On SDS-PAGE under reducing (R)/non-reducing(N-R) condition. The gel was stained overnight with Coomassie Blue. The purity of the protein is greater than 95%.

SEC-HPLC



The purity of this product is more than 95% verified by SEC-HPLC.

Data Examples

Bioactivity-ELISA

Mouse CTLA4 Protein; His Tag (Catalog # GM-87557RP) was immobilized at 1 µg/ml (100 µL/well). Increasing concentrations of Anti-mouse CTLA4 mIgG2b Antibody(9D9) (Catalog # GM-87752MAB) were added.

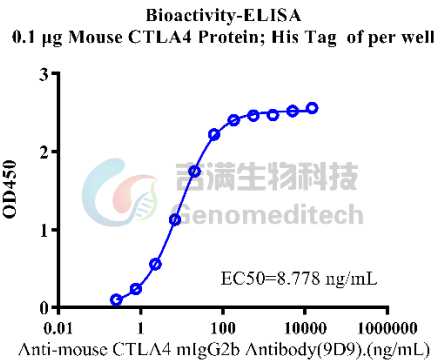


Fig. Assay

Bioactivity-ELISA

Biotinylated Mouse CTLA4 Protein; His-Avi Tag (Catalog # GM-87558RP) was immobilized at 1 µg/ml (100 µL/well) on streptavidin precoated. Increasing concentrations of Anti-mouse CTLA4 mIgG2b Antibody(9D9) (Catalog # GM-87752MAB) were added.

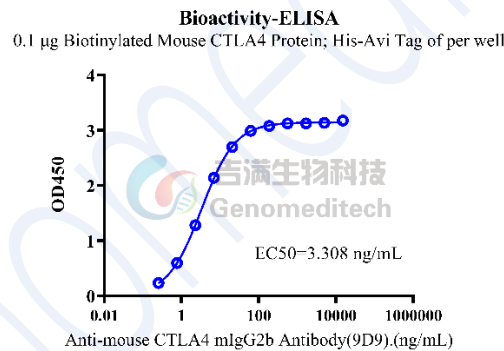


Fig. Assay